

**RYDE-PARRAMATTA  
GOLF CLUB LTD**

# Dress Regulations

## COURSE & CLUBHOUSE

The Management reserves the right to refuse entry onto the Course or Clubhouse if found non-compliant with Club's requirement.



## Course - Acceptable

### Shirts



Collar



Mock Turtle Neck



Skivvy

### Trousers & Shorts



Pants



Plus Fours



Tailored



Knee Length Tailored  
(up to 5cm below knee)

### Shoes



Soft Spike



Sport - Golf Shoe

### Socks



Long White



Anklet White



Sockettes White

## Course - Unacceptable

### Shirts



No Collar



Excessive Logo



Hanging Out

### Trousers & Shorts



Denim



Cargo



Elastic Waist



Too Long



Cargo



Elastic Waist



Too Short

### Shoes & Socks



Joggers



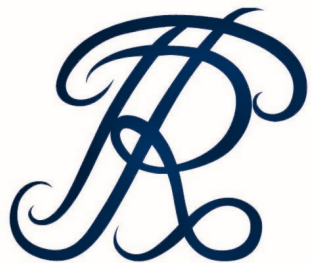
Boat Shoes



Sandals



Long or Short Colored Socks



**RYDE-PARRAMATTA  
GOLF CLUB LTD**



## Clubhouse - Acceptable

### Shirts



Collar



Mock Turtle  
Neck



Skivvy

In addition to the above, neat and tidy-shirts or dress shirts may be worn.

### Trousers & Shorts



Pants



Plus Fours



Tailored



Knee Length  
Tailored

In addition to the above, well maintained denim is permitted except when an event with a dress code is hosted.

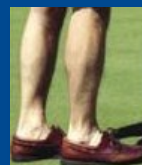
### Shoes & Accessories



Soft Spike



Sport - Golf Shoe



Boat /Deck Shoes  
& No Socks

## Clubhouse- Unacceptable

### Shirts / Trousers / Shorts



Track Suits



Excessive  
Logo



Singlets



Swimwear



Gym Wear



Football Attire



Torn/Ripped  
Jeans



Work Apparel



Elastic Waist

### Shoes & Others



Metal



Thongs /Casual  
Sandals



No cap or hat